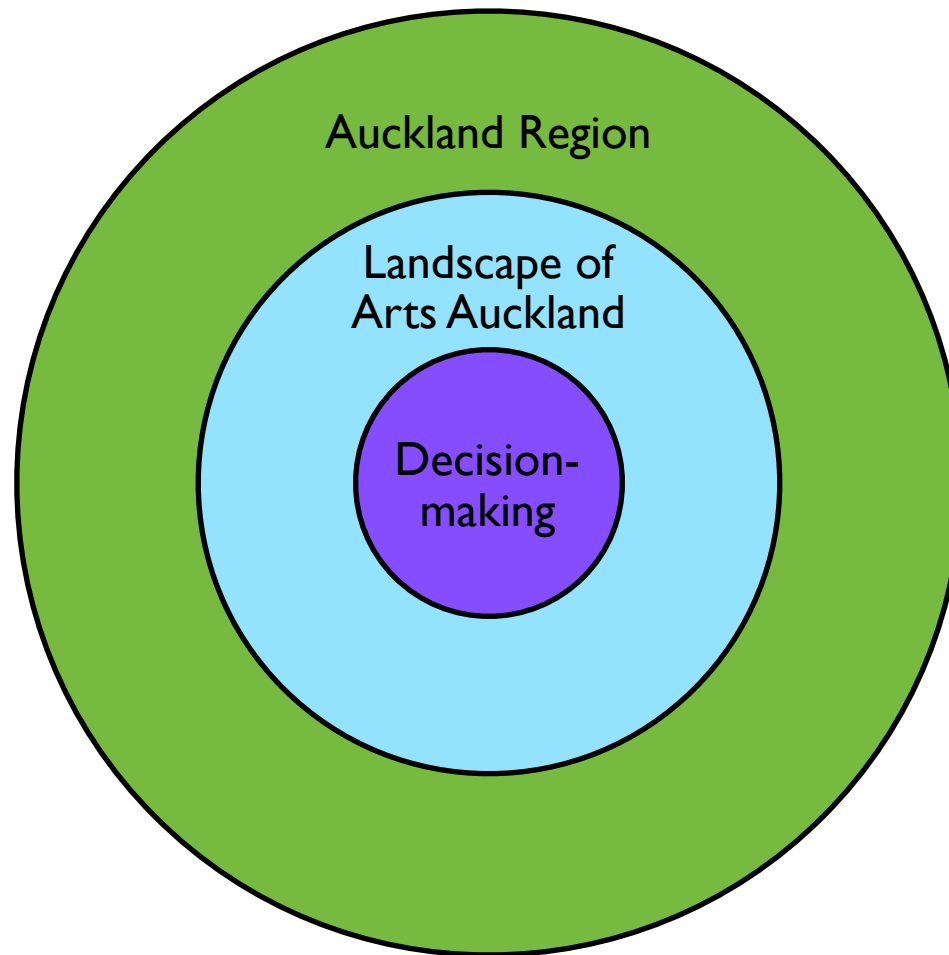


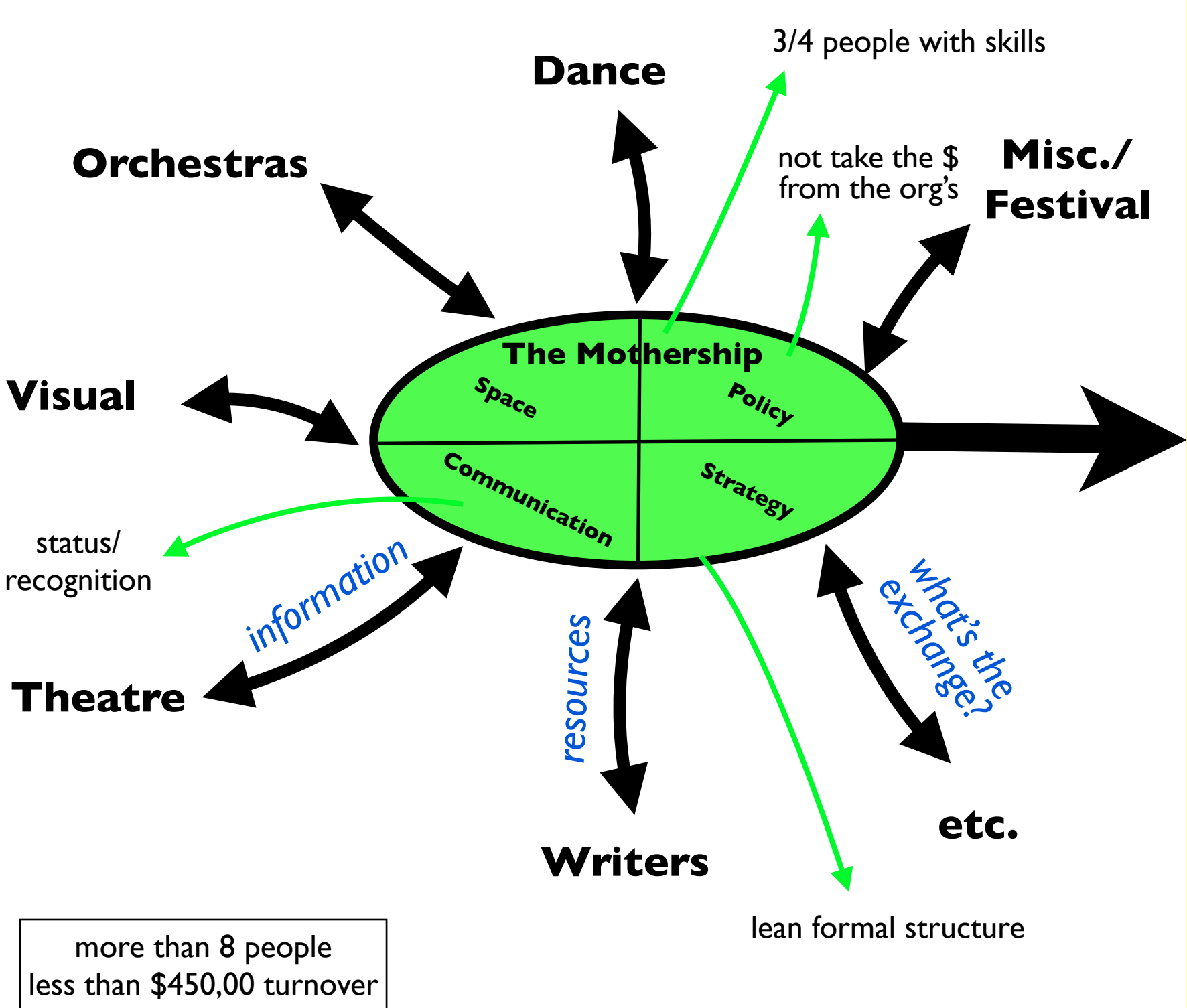
Structure:



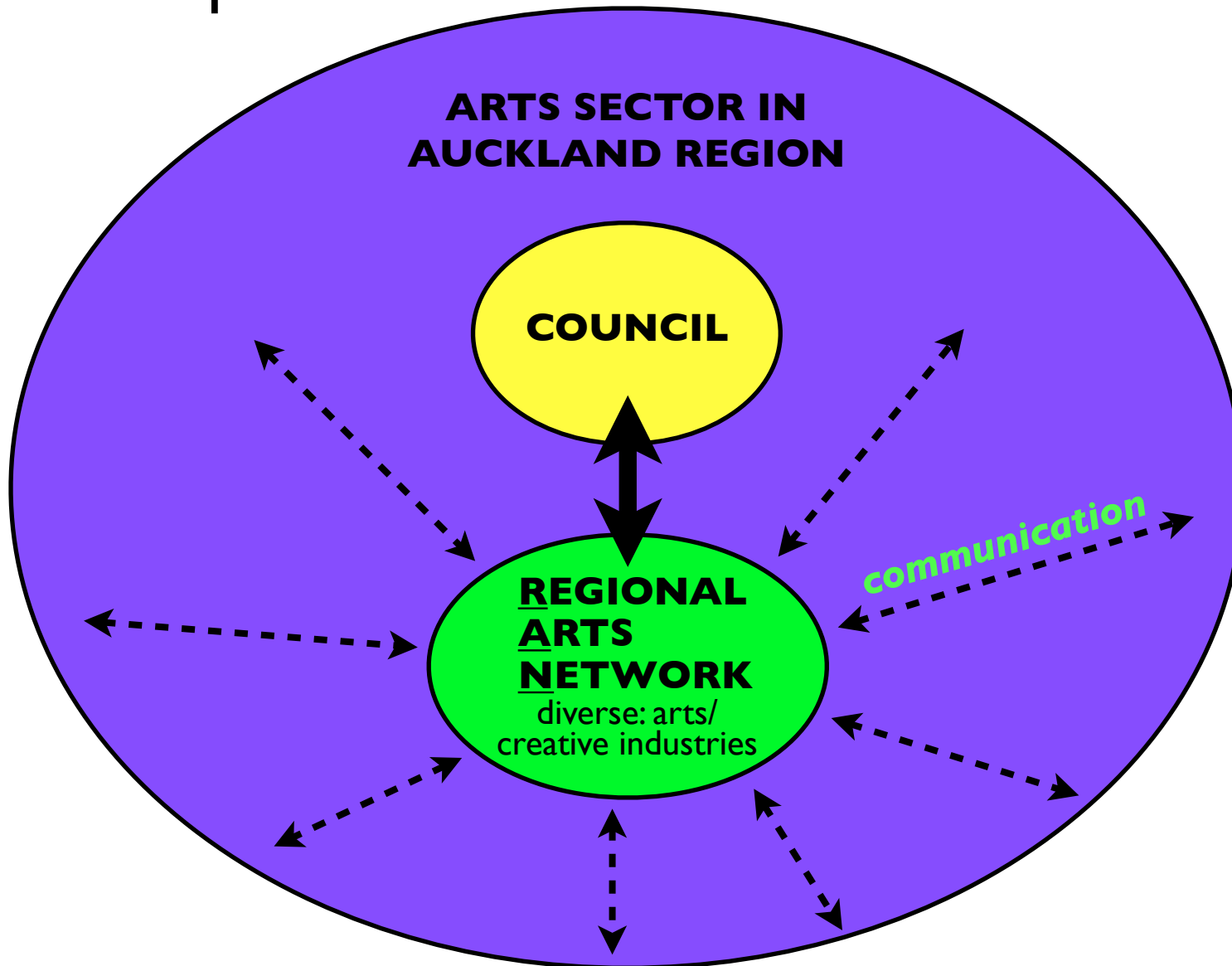
Organisation model options:

- Constituted organisation
- Information portal/network with elected 'central committee'

Group of 3
\$450k and under turnover



Group A



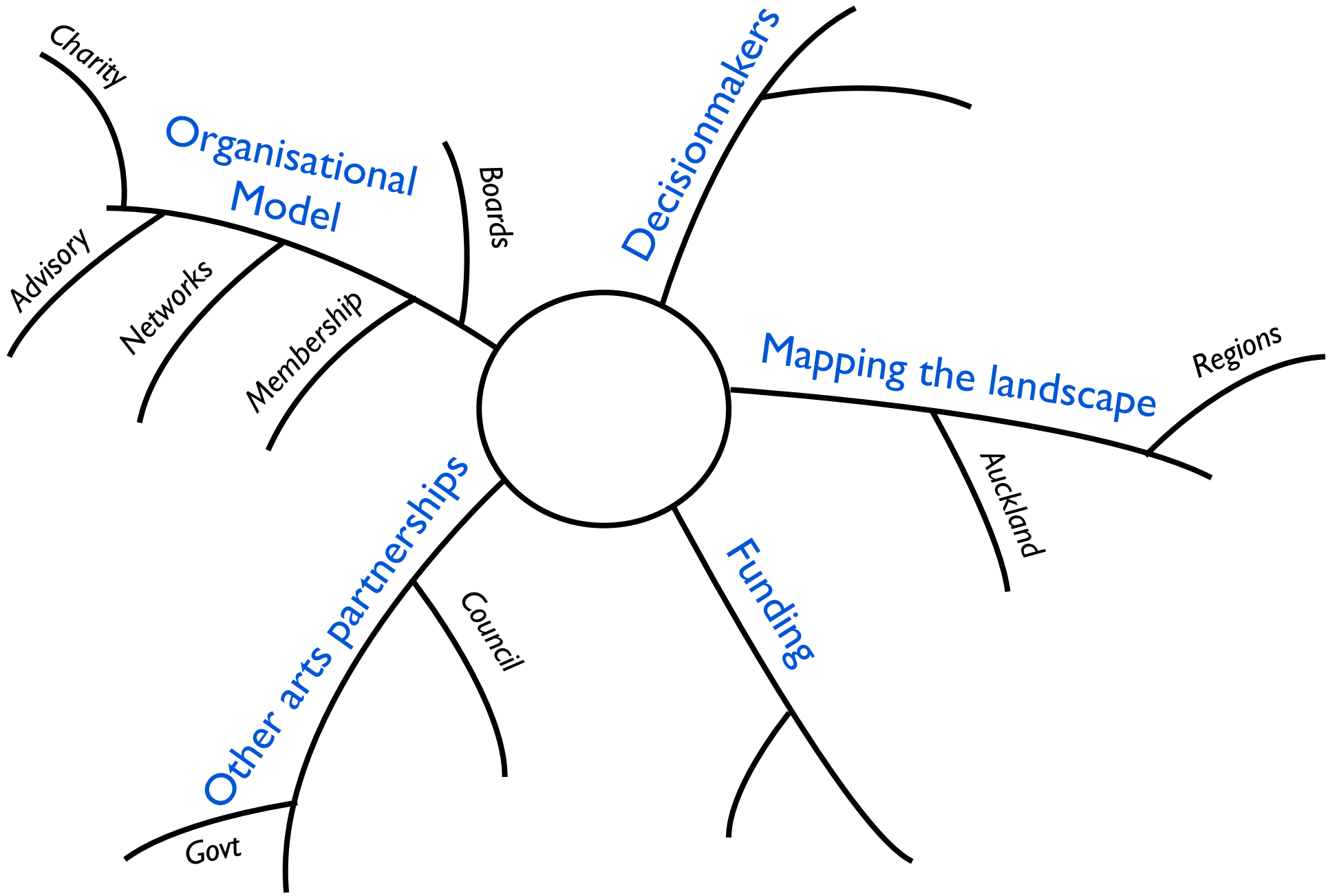
RAN

Skill base + in depth knowledge + advocacy + local body

- * clear intention of group relates to council's needs
- * knowledge of policy
- * clear articulation of needs

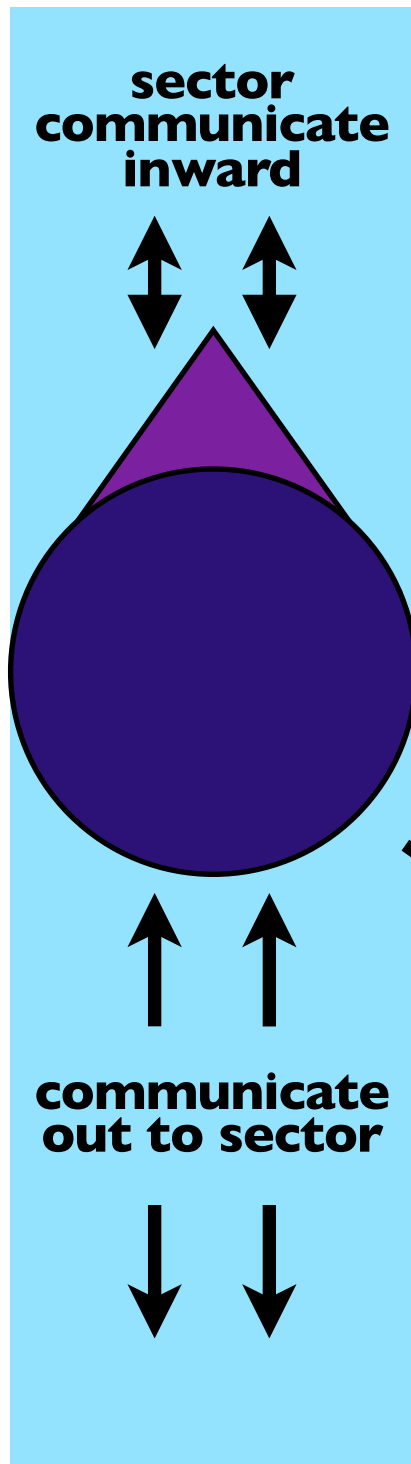
Ist Steps:

- * identifying skills in new people
- * processes for gathering info from sector
- * research



- subject matter
- experts in alliance
- trusted people that council connect with

- democratic
- representative
- membership driven
- culture and creative sectors represented
- diversity addressed

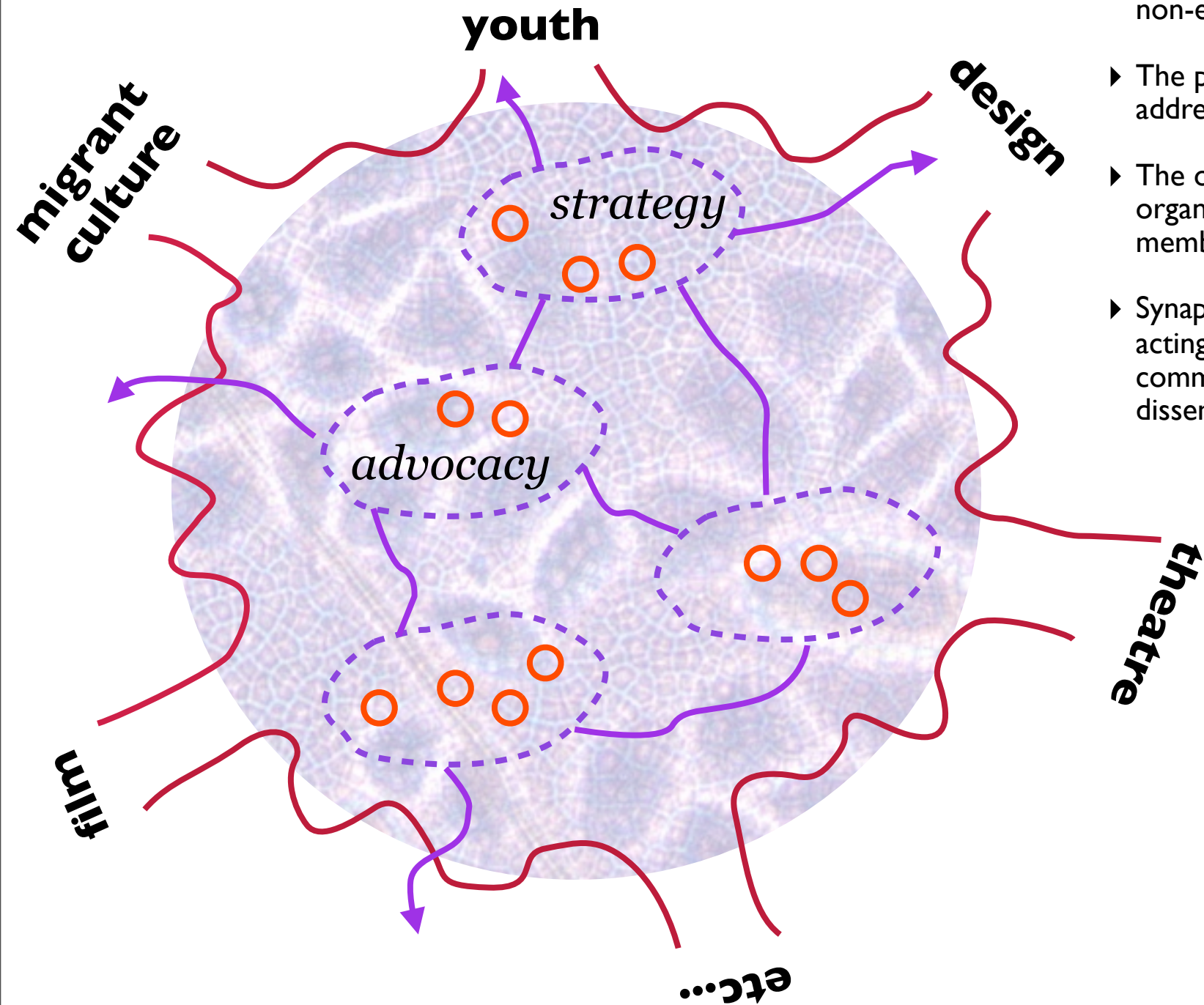


- bureaucracy
- political body
- RFA + ATEED + Waterfront CCO

communicate beyond the sector:

- business
- finance
- education
- govt

THE BODY/BRAIN OF AUCKLAND ARTS:



- ▶ The cellular, rhizome-like structure is accessible and non-exclusive.
- ▶ The purple cells form to address tasks as required.
- ▶ The orange neurons are the organisations that make up the membership.
- ▶ Synapses connect the cells, acting as pathways for communication and also disseminate info outwards.